



CHESHIRE SENIORS MONTHLY

Homecare in Mid and South Cheshire

At Right at Home, we aim to make a genuine difference to the quality of life of those we serve in the local community. We focus on improving the lives of those we care for, not just maintaining quality of life.

Making a Difference Every Day

From every CareGiver to our local Management Team, we are completely focused on making a difference every day. Keeping our Clients where they want to be for longer – Right at Home.

Our local office teams based in Nantwich, Sandbach and Northwich work tirelessly to deliver on our promises. For us it is not just about providing a service, it is about building valuable relationships with everyone we work with.

Our Trusted Services

Through trust and commitment to being the best, the quality of the care we provide has been industry-recognised, leading us to be rated as Outstanding by the Care Quality Commission and become the most highly rated national homecare agency on the UK's leading review site, www.homecare.co.uk.

South Cheshire Promotions

We would like to congratulate Kirsty Roberts, and Pam Spellacy who have both received promotions within the last couple of weeks. Kirsty has now taken on the role Head of Care Operations, and Pam is now the Lead Senior CareGiver.

When asked about Kirsty's promotion, Managing Director Ben Selby said, "***I would like to wish Kirsty all the very best in her new role and congratulate her on what she has achieved with the company so far. She was our first employee and has been with the company over 5 years, during which time she has continued to improve as a manager and care professional***".

Pam has been recognised for taking on extra responsibilities as our most experienced Senior CareGiver, and often mentors newer Senior CareGivers and for this has been promoted to Lead Senior CareGiver.



Kirsty Roberts, Head of Care Operations



Pam Spellacy, Lead Senior CareGiver

One Year at the Adult Day Centre

It has been 1 whole year since we officially opened our Adult Day Centre, at the office in Nantwich. We have welcomed a lot of guests over the year, and now have many regular visitors on the days that we are open.

We are always looking for more people to join our Day Centre and have many fun activities taking place each day. This ranges from arts & crafts to playing carpet bowls.

If this is something you think that you would enjoy, or think that a loved one would enjoy, then give us a call and speak to a member of our very helpful office team on 01270 257 347.



Right at Home Mid-Cheshire

Mid-Cheshire Promotions

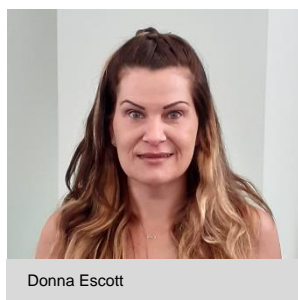
Congratulations to Karen Hayes-Brotherton and Donna Escott who have both recently received a promotion for their continued hard work.

Karen has been working as a Senior CareGiver but has now taken the opportunity to step up and be Care Team Leader.

Donna has been successful in her application to become a Senior CareGiver, after her interview process.



Karen Hayes-Brotherton



Donna Escott



Janet Bennet at Cheshire College S&W

Janet visits Cheshire College SW

Mid-Cheshire's Janet Bennett, Business Development Manager visited Cheshire College South & West to talk to students about the Adult Social Care sector. She said it was a "privilege" to present to the students.

Janet has been asked to go back to the College later this year, to deliver a session on Dementia Friends as she is a Dementia Ambassador.

Easter Social Group

Some of our amazing CareGivers attended a local social group with several of our Clients over the Easter period. They had a lovely hearty lunch, and so much fun was had whilst making Easter Bunnies.

As well as attending the social group with their Clients, the team were also creating Easter cards for friends & family, plus Easter bonnets and door wreaths.



Mid-Cheshire Contact Details

Address: Winnington Hall, Winnington Lane, Northwich, Cheshire, CW8 4DU

Telephone: 01606 537 400 - **Email:** midcheshire@rightathome.co.uk



Sandbach Office almost up and running!

We've made some excellent progress with our Sandbach office, and have started using the Sandbach Literary Institute for Training, Team Meetings, and occasional office use. We're still waiting for the CQC Registration to be complete, which means we can fully run a service from there full time, and store Client/Staff files on site.

The office is all set up with desks, phones and internet all connected now too.

Ella and Keri are have started working from there, so they are on hand for our CareGivers and Clients in the centre of Sandbach. Feel free to pop in for a brew and to collect essentials such as PPE, Covid Testing kits and of course a warm brew and biscuit!

making a difference every day

At Right at Home, our values are at the heart of everything we do. It is our commitment to these four core values that enables us to deliver on our promise of improving quality of life for our Clients and their families.

TRUST – trust is fundamental to building strong, collaborative relationships with our Clients and their families.

QUALITY – we are committed to providing the highest quality care and support; the same kind of care we would like for our own family.

COMPASSION – we pride ourselves on person-centred, outcome-focused care, delivered with compassion, sensitivity and without judgement.

RESPECT – we promote an all-inclusive culture, where colleagues and Clients can be themselves. We respect people's wishes, seek to understand their aspirations, and support them to achieve their personal goals.

Jubilee Music Extravaganza

Rotary Club of Wych-Malbank are pleased to announce a Jubilee Music Extravaganza featuring The Bluebirds.

About this event

A fun evening of lively music featuring **THE BLUEBIRDS**, as seen on TV with Jane McDonald, with a rousing proms-style finale!

Tickets are £15 for adults and £7.50 for children. Includes a soft drink and biodegradable flag to wave!

Raising money for North West Air Ambulance Service and other local charities.

Tickets can be purchased online at:
<https://www.eventbrite.co.uk>

Date and Time

Sat, 14 May 2022, 19:30 BST

Location

St Mary's Church, Nantwich
Church Lane
Nantwich
CW5 5RQ



JUBILEE music
EXTRAVAGANZA

Rotary
Wych-Malbank
(Nantwich)

Saturday 14th May
7:30pm

St Mary's Church, Nantwich. Doors open 7pm.

Join our Team – RECRUITING NOW

Here at Right at Home, we offer top rates of pay and flexible work patterns because we know how important it is for our valued CareGivers to have a positive work-life balance. Take a look at the videos below to find out why people are proud to be part of our team.

We believe in supporting all of our employees to be the best that they can be! The sky's the limit at Right at Home, whether you need practical experience to help you with your studies or you want to progress into management, we are happy to help!

If you would like to enquire about any of our job vacancies, please contact us on:

South Cheshire (Nantwich) 01270 257 347 or Mid Cheshire (Northwich) 01606 537400
cheshirejobs@rightathome.co.uk